



## Bathing establishment Fact Sheet

Name of bathing establishment	3 STELLE
Address	Viale Regina Margherita, 64,
City	Viareggio (LU)
Contacts	Tel- +39 0584 44370 email <a href="mailto:trestellebeach@yahoo.it">trestellebeach@yahoo.it</a>
Website	<a href="https://www.facebook.com/trestellebeachfan/?locale=it_IT">https://www.facebook.com/trestellebeachfan/?locale=it_IT</a>

**TESTED BY:** [Handy Superabile - Social Promotion Association](#) in summer 2023

**Please note** The following information refers to the verification date shown at the bottom of each sheet. The Association is not responsible for any significant changes made to the property after the visit.

### Summary

Bathing establishment Fact sheet.....	1
Arrival at the facility.....	2
Private/public parking.....	2
Pathway from the parking lot to the main entrance .....	2
Reception welcome.....	3
Bar/restaurant.....	4
Internal pathways and common services .....	5
Internal pathways.....	5
Toilet and shower accessible to guests with reduced mobility .....	6
Changing room .....	7
Beach.....	8
Children's play area .....	8
Pool.....	9
Medical practices/health facilities.....	9


Project carried out with the contribution of





## Arrival at the facility

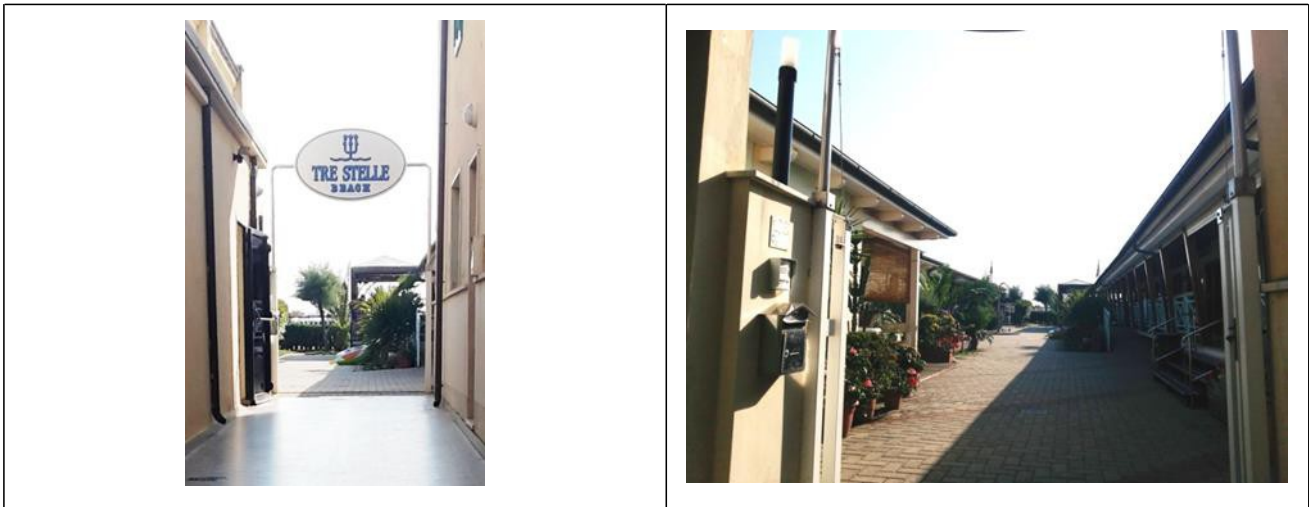
### Private/public parking

Presence of private parking	NO
Public parking nearby	YES about 50/100 meters away
Type of parking lot	ASPHALT
Presence of parking space reserved for people with disabilities	YES
	Parking reserved for disabled people

### Pathway from the parking lot to the main entrance

Pathway from the parking lot to the entrance	flat
There are indicators and tactile maps	NO
Useful width of door/entrance passage	greater than 90 cm







**Reception welcome**

Umbrella booking system	<input type="checkbox"/> Via the web <input checked="" type="checkbox"/> Via telephone <input checked="" type="checkbox"/> On site
Presence of multilingual staff	not detected
Presence of plant plan with legend of services available	NO
Presence of visuo-tactile map	NO
Noticeboard/information panels at an average height of 130 cm in a well-lit area and a character size of at least 14 dpi with a contrast ratio greater than 4.5:1	NO
The staff has undergone training on welcoming people with various disabilities	NO





**Bar/restaurant**

Type of venue	Snack bar
Access to the venue	via ramp length 650 cm, width > 100 cm, slope 8% and handrail on the left
Useful width of door/entrance passage	greater than 90 cm
Bar counter	height greater than 100 cm
Type of tables	With 4 legged
Space under the floor tables	67 cm
Multilingual menu	not detected
Menu with large print characters	NO
Braille menu	NO
Table service for people with disabilities	YES
Availability of food for celiacs	<input type="checkbox"/> bread <input type="checkbox"/> pasta <input type="checkbox"/> cookies <input type="checkbox"/> ice creams <input type="checkbox"/> pre-packaged foods
	



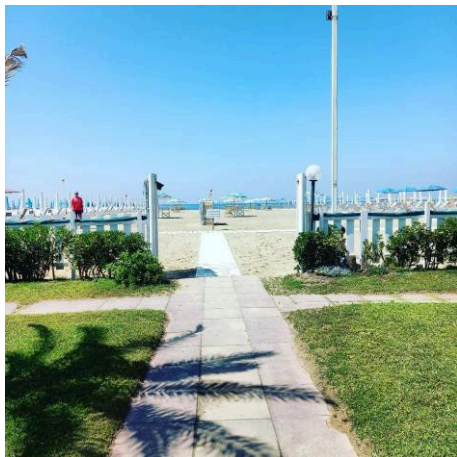


### **Internal pathways and common services**

#### **Internal pathways**



Indicate whether the pathways connecting the entrance to the beach are flat or with ramps in addition to those already described

obstacle-free pathways





**Toilet and shower accessible to guests with reduced mobility**

Number of toilets accessible/usable by guests with reduced mobility	1
Access to the venue	via ramp length 650 cm, width > 100 cm, slope 8% and handrail on the left
Useful width of entrance door	85cm
Toilet height	50cm
Open front toilet seat	YES
Support handles	to the left of the toilet
Flexible shower next to the toilet	YES
Free space on the sides of the toilet	to the left 33cm To the right 75 cm partial due to the sink Front 96 cm
Electric bell/telephone	YES
Washbasin with space underneath for a wheelchair	76 cm
Height from the ground to the lower edge of the mirror	not sufficient for use by people in a wheelchair
Baby changing table	not detected
	
Shower accessible to guests with reduced mobility available	Yes, shared with the toilet room

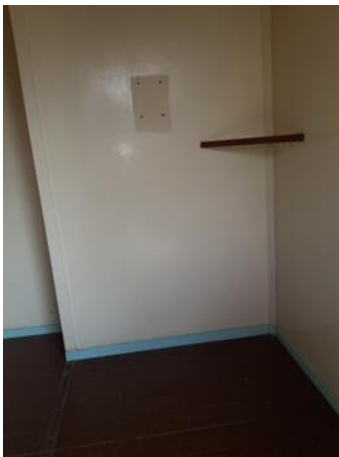




Shower type	open type
Floor-level shower	YES
Shower chair	missing
Support handle	NO
Presence of shower head or latch	flexible shower
Electric bell/telephone	YES

### Changing room

Changing room accessible to guests with reduced mobility available	YES
Access to the venue	via the same ramp that leads to the toilet room: length 650 cm, width > 100 cm, slope 8% and handrail on the left
Useful width of door/entrance passage	84 cm
Dimensions of the changing room	width 145 cm and depth 250 cm
Presence of cot	NO
Coat stand height from the floor	180cm




Changing room





## Beach

Type of beach	sand
Access to the beach	flat
Walkway to reach the umbrellas	YES
Type of walkway	made of PVC
Walkway width	90cm
and the umbrella station to facilitate the passage and parking wheelchair	
Amphibious beach chair available for helping people with reduced mobility to enjoy swimming (owned by the establishment or by association)	NO

## Children's play area

Children's play area	Not detected
----------------------	--------------





---

**Pool**

The property has a swimming pool	NO
----------------------------------	----

**Medical practices/health facilities**

Hospitals near the facility	Versilia Hospital SS 1, 335, 55049 Camaione LU Telephone: 0584 6051
Other healthcare facilities	Health District ASL No. 12 Viareggio Place Buon Consiglio Viareggio Tel. 0584.6056353 Dialysis service c/o CISANELLO HOSPITAL OF PISA Dialysis therapy department (hemodialysis – peritoneal dialysis) in the period June - September Holiday Dialysis Service with availability of n. 6 beds tel. 050 997250 – 997253 – 997256

TESTED BY: Handy Superabile -Social Promotion Association - in summer 2023

